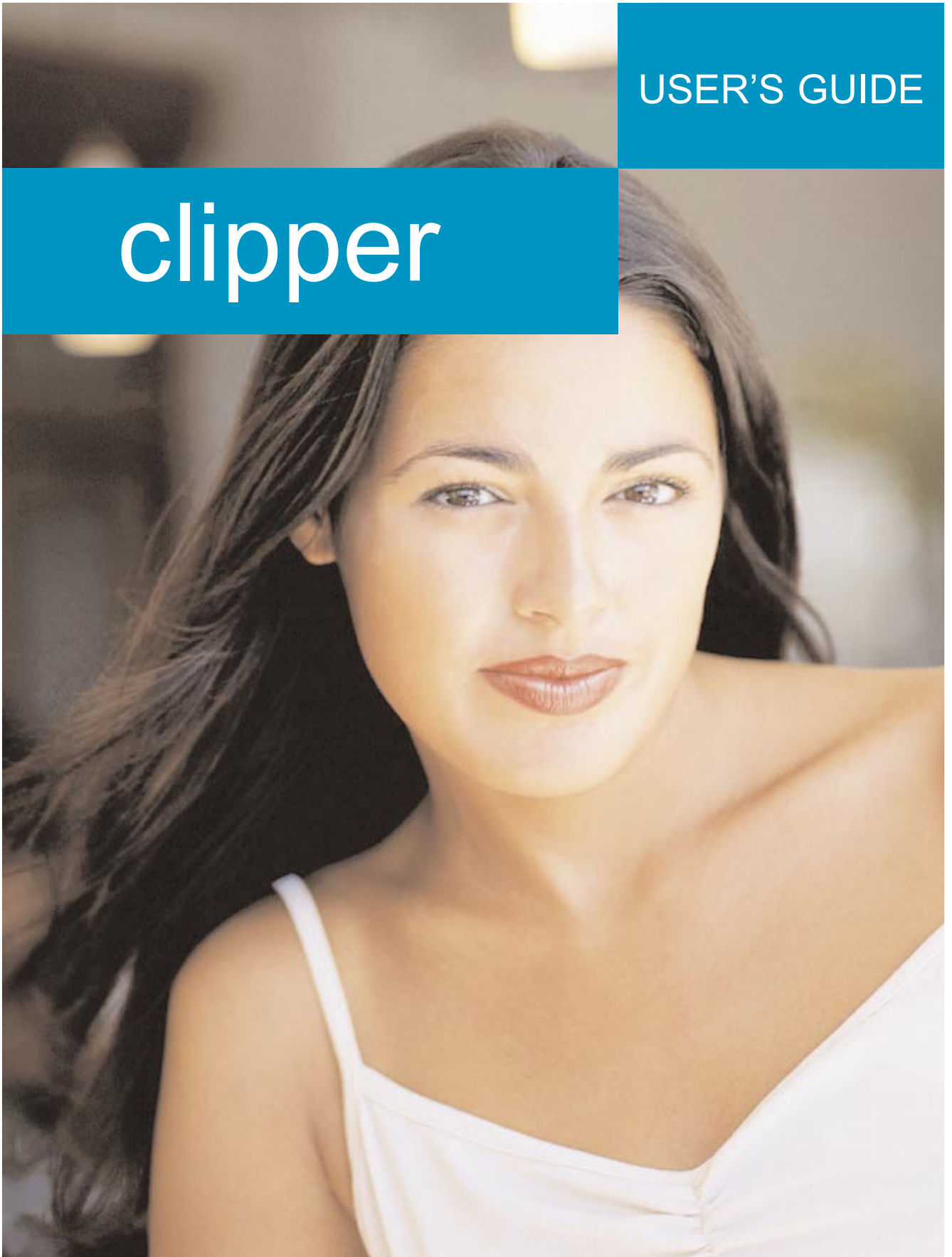


USER'S GUIDE

clipper



welcome to clipper

Clipper Creative Art Service® is your resource of top-quality, expressive illustrations and photos that bring a diversity of fresh styles and timely subjects to your visual projects and communication. Included are 40 vibrant, 300-dpi stock photos featuring contemporary people, dramatic backgrounds and textures.

Also, be sure to check out *Clipper*, our full-color, 40-page monthly magazine that gives you valuable tutorial techniques, scores of design ideas and a convenient pictorial index.

BASIC REQUIREMENTS

All documentation assumes you have a basic understanding of how to use your computer and its programs.

Images

Clipper images require applications compatible with TIFF, JPEG and EPS file formats. TIFF images are saved as TIFF files in Adobe Photoshop. JPEG images are saved with the highest compression setting. EPS images are saved as Adobe Illustrator 5.0 files.

Hardware

Hardware requirements depend on the applications you use and the final output you plan to produce. For best results with EPS images, your printer should be PostScript compatible.

Custom search service

As a *Clipper* subscriber, you have exclusive access to Dynamic Graphics' extensive image library. We've accumulated the works of top illustrators and photographers into one of the largest professional libraries during our nearly 40 years of supporting the needs of graphic designers.

Whenever your project calls for a specific image that isn't in your personal collection, you can call our CustomerOne representatives at **888-698-8546**. They will be happy to conduct a custom search for you. Just provide your name, address, account number, and a description of the image you're looking for. We'll fill your order quickly and either ship or modem it to you for only \$10 per image (extra for overnight requests).

Search online

You can also visit imageBlitz.com, our ever-growing treasury of royalty-free commissioned art, to personally search and download images for only \$10 each.

You can join imageBlitz.com for free. Doing so is easy. During your first online visit, we ask you to fill out a simple form to assure all information about you is correct. If you are already a member of creatas.com or dgusa.com, please enter the e-mail address and password you use at creatas.com or dgusa.com. (If you create a new password, access to [imageBlitz](http://imageBlitz.com) will be denied.)

Where the form asks for your Dynamic Graphics number, type your *Clipper* account number (it looks like a 7-digit phone number), *but do not enter any dashes or empty spaces*. The \$69 annual membership fee charged to nonsubscribers is waived, and you can perform unlimited downloads for just \$10 each for as long as you maintain your *Clipper* subscription. (Nonsubscribers pay \$20.)

Custom image search: **888-698-8546**

Search and download: www.imageBlitz.com

locating images

CLIPPER MAGAZINE

Clipper contains a pictorial index that provides a thumbnail and file name for each image in the issue.

EXTENSIS PORTFOLIO BROWSER

Included on the CD is a copy of the Extensis Portfolio Browser that allows you to “browse” a catalog of images. You can view the thumbnails, search for images by typing keywords, preview images and copy them to your hard drive. The browser runs off of the CD; no installation is required.

Opening the electronic catalog with the Portfolio Browser

Macintosh Users

Double-click the “ECXX02.fdb” file to open the catalog containing all the current month’s images. Double-clicking the “EC200X Cumulative.fdb” file opens the catalog containing all images from January through the current month.

Windows Users

1. Launch the Extensis Portfolio Browser.exe file found in the Extensis Portfolio Browser folder.
2. From the Open Catalog dialog box, move up one level and open the “ECXX02.fdb” file.

For instructions regarding the browser itself, refer to “Portfolio 4.1 Browser QSG.pdf” in the Extensis Portfolio Browser folder.

None of the items in the catalog folder (including the Extensis Portfolio Browser) are needed to use the artwork on the CD.

using clipper images

PAGE LAYOUT PROGRAMS

Open or create a document in your page layout program, then **PLACE** any TIFF or EPS image.

- In QuarkXPress, draw a picture box, then choose Get Picture from the File menu.
- In Adobe PageMaker, choose Place from the File menu, select the desired image, then click where you want the image to be placed.
- In Adobe InDesign, choose Place from the File menu, select the desired image, then click where you want the image to be placed.
- In Microsoft Word, place the cursor where you want the graphic to be, then choose Insert from the Picture menu.

DRAW PROGRAMS

OPEN or **IMPORT** any EPS image.

- In Adobe Illustrator, choose Open from the File menu.
- In Macromedia FreeHand, choose Open from the File menu.
- In Corel DRAW!, choose Open or Import from the File menu.

When you open or import an EPS image in a draw program, you will be able to manipulate the image just as you would manipulate artwork that you created in the program—deleting or redrawing shapes, changing colors, etc.

Many *Clipper* images have grouped elements that allow an entire section or object to be lifted out and used as stand-alone art. To pull apart grouped elements of an EPS file, you must open or import it in a PostScript draw program, such as Adobe Illustrator or Macromedia FreeHand.

Caution for FreeHand users: Artwork can also be accessed by choosing Place from the File menu, but when you use this option, you will not be able to edit the artwork. To be sure you can edit the artwork, use the Open command rather than the Place command.

OPEN, **IMPORT**, or **PLACE** any TIFF image.

- In Adobe Illustrator, choose Open or Place from the File menu.
- In Macromedia FreeHand, choose Open or Import from the File menu.
- In Corel DRAW!, choose Open or Import from the File menu.

When you open, import, or place a TIFF image in a draw program, you will not be able to edit the image.

using clipper images

PAINT PROGRAMS

OPEN any TIFF or JPEG image.

- In Adobe Photoshop, choose Open from the File menu.

When you open or import a TIFF or JPEG image in a paint program, you will be able to manipulate the image just as you would manipulate artwork that you created in the program—applying filters, making selections and filling them with color, etc.

OPEN any EPS image.

- In Adobe Photoshop, choose Open from the File menu.

When you open or import an EPS image in a paint program, the image will be converted from vectors to pixels. You will be able to manipulate the image just as you would manipulate artwork that you created in the program—applying filters, making selections and filling them with color, etc.—but you will not be able to edit the contours as you would in a vector-based draw program.

If your application was not listed above, please consult your manual for compatibility.

filename conventions

Each image is identified by a file name.



EPS (Encapsulated PostScript) images are resolution-independent. Reducing or enlarging an EPS image does not affect quality.

“Grouped elements” are those EPS files that when opened in a Postscript draw program contain objects that are easily selected by a single click.

TIFF (Tagged Image File Format) images are bitmapped, and resolution affects quality. Illustrations are provided in a variety of resolutions:

Black and white	300 and 600 dpi
Grayscale	170 and 300 dpi
Color	170 and 300 dpi

JPG: (Joint Photographic Experts Group) images are compressed at a high setting. Stock photographs are provided as 300-dpi/CMYK files and 72-dpi/RGB files.

tutorial images

The Tutorials Folder contains files you'll use to follow the step-by-step instructions in the how-to features in *Clipper* magazine.

In the magazine, these tutorial files are identified by the file name listed beneath each image.

Software requirements:

Tutorial files were created with the following software versions: Photoshop 5.5, Illustrator 8.0.1, and QuarkXPress 4.04. Some tools or features may not be available in other versions of the software.

Please e-mail your comments, suggestions, or requests for specific tutorial exercises to: brophy@dgusa.com.

license agreement & copyright information

For our most recently updated License Agreement, please visit us on the Internet at www.dgusa.com

THIS IS A LEGAL AGREEMENT BETWEEN YOU AND DYNAMIC GRAPHICS, INC. THE TERM CONTENT IS DEFINED AS ANY IMAGES, ILLUSTRATIONS AND PHOTOGRAPHS, INCLUDED IN THE PRODUCT PURCHASED. BY USING CONTENT, YOU AGREE TO BE BOUND BY THIS AGREEMENT. IF YOU DO NOT AGREE, PROMPTLY DISCONTINUE USE.

AGREEMENT IS AS FOLLOWS:

All Content is licensed to or owned by Dynamic Graphics and is protected by international copyright laws. Dynamic Graphics warrants that it has the right to grant this license to you. This is a perpetual License at will and can be terminated by Dynamic Graphics at any time. Neither Dynamic Graphics nor its licensors shall be liable to you for any consequential, incidental, direct, indirect or other damages arising out of the license of Content, including any claim of a third party.

Your rights of usage under this Agreement is the nonexclusive, nontransferable right to use the Content in whole or in part in advertising and promotional materials for you or your customers or direct clients. Examples of use include advertisements, articles in magazines and newspapers, reports, brochures, books, newsletters, multimedia applications and presentations, packaging, broadcast, films, documentaries, television productions, commercials, and training and industrial videos. Content may be used as part of a Web site or design that appears on a Web site on the Internet but may not be used in a downloadable or FTP format.

Content may not be rented, sold, given away, leased, sublicensed or loaned in any form. Additionally, you agree to take all steps necessary to prevent any third party from duplicating or distributing any Content. Defamatory, offensive, pornographic, or otherwise unlawful uses of images are expressly prohibited. Use of logos or trademarks without authorization from the owner is denied. The use of Content in whole or in part without written permission for multiple resale in the form of stock proofs, engravings, film, mats, printing, digitized images, etc. is expressly denied.

All equipment accessing Content must be at one physical location and be operating under one organization. No copies of this Content may be resold or redistributed.

This license will terminate automatically without notice from Dynamic Graphics if you fail to comply with any provision of this license. Upon termination, you shall destroy all Content or copies thereof. If any provision of this Agreement is held invalid, the remainder of the Agreement shall remain in full force and effect.

All rights not specifically granted to you by this Agreement are reserved. Questions on usage or rights should be directed to Dynamic Graphics, Inc. at the address or telephone number listed below.

This Agreement shall be governed by the laws of the State of Illinois.

Copyright 2002
Dynamic Graphics, Inc.,
6000 N. Forest Park Drive, Peoria, IL 61614
888-698-8546

All Content is licensed to or owned by Dynamic Graphics, Inc.

limited
warranty
& site
license

LIMITED WARRANTY

For 90 days from the date of delivery to the purchaser, Dynamic Graphics, Inc., warrants to the purchaser that the materials on which the software (product) is recorded are free of defects in manufacture or damage during shipment, and that it is correctly recorded. Any return must be because of manufacturing defect or damage during shipment and be made to Dynamic Graphics, Inc., or the authorized dealer where the product was purchased. Product cannot be returned because of defect due to abuse, negligence, accident, or alteration.

SITE LICENSE INFORMATION

Site licenses are available upon request from Dynamic Graphics, Inc. For more information, please call CustomerOne at 888-698-8546.

tech support
& contact
information

Visit us on the Internet at www.dgusa.com.

Dynamic Graphics, Inc.
6000 N. Forest Park Drive
Peoria, IL 61614-3592

CustomerOne

Phone: 888-698-8546

Fax: 309-688-5873

Business hours are Monday through Friday from 7 a.m.
to 7:30 p.m. (Central).

Technical Support

Phone: 800-227-7048, Ext. 221

E-mail: tech@dgusa.com

Content Directors:

Corey Smith

smith@dgusa.com

Jim Mistic

mistic@dgusa.com

International customers, contact your local Dynamic
Graphics representative.